



IT'S YOUR TURF.

URBAN SOCCER PARK - A REVOLUTIONARY SOCCER EXPERIENCE



URBAN SOCCER PARK

Sport, Community, Court



At Urban Soccer Park, we know sports can change lives and transform communities. That's why we are committed to providing quality fields that are accessible, affordable, and most importantly offer an exciting and engaging experience. USP is a unique combination of sport and court that allows both players and spectators to be immersed with a fast-paced, high-energy game.

Soccer is the beating heart of countless cultures around the world, but in the U.S., we've been hindered too long by limited space or substandard facilities. USP helps remove these barriers by providing efficient, professional-grade fields that can be customized to nearly any space. Help us meet the demands of soccer in your neighborhood with a USP field, and see your community thrive.

Join us today.



THE OPPORTUNITY

Entrepreneur

AN INNOVATIVE SOLUTION TO MAKE YOUR AMERICAN DREAM A REALITY

The biggest soccer nations in the world are built on a futsal foundation. Elite players across the globe cite small-sided soccer as a decisive factor that helped them go from good to great. Take a look at the best clubs and athletes and you will find the developmental benefits of playing futsal are simply indispensable. Equally important, futsal is a game that is beloved and played by people of all ages and background. It fosters a culture of creativity and connection, and forms bonds that extend to greater society. Too often in the U.S., we find barriers of entry to quality playing fields that are either difficult to find or expensive to rent. This has not only stunted youth development in the sport, it has hindered our soccer culture from flourishing.

Urban Soccer Park offers a high-quality, affordable solution that answers the need for field space and provides the environment for focused training and thrilling matches. Our fields can be installed and fitted for virtually any space (rooftops, gyms, tennis courts—you name it, we'll make it work), and feature a modular, mobile design that offers a new level of customer customization. Designed by futsal experts, USP checks all the boxes when it comes to quality, sustainability, and user experience. We're passionate about spreading this game across the nation, and hope you'll join us in making this positive change to your neighborhood.

BENEFITS

Entrepreneur

✓ NEXT GEN OF SOCCER BUSINESS

Tap into the booming trend of small-sided soccer loved worldwide and taking off in the U.S. Be the first to give your town a thriving sports hub fit for all ages and skill level.

✓ SMART & SUSTAINABLE

Generate strong return on investment with low-cost, high-value field. Increase profit margin with more revenue per square foot, branding options, and low overhead, plus diverse, year-round programming.

✓ SIMPLE SETUP

Speedy installation requires no pouring, penetration, or foundation. Fields are modular, customizable, and mobile, yet durable and built to last. Optional add-ons available.

MAXIMIZE YOUR IMPACT

SPACE EFFICIENCY

8X

MORE PLAYERS PER SQUARE FOOT

Walled courts coupled with small sided game format is ideal for real estate constrained urban settings. Our pitches allow more kids per square foot than a regulation field

PLAYER ENGAGEMENT

60%

MORE PLAYERS PER SQUARE FOOT

Our walled mini-pitches provide a continuous play environment which naturally activates and engages players at all times. This encourages player development

COMMUNITY ACTIVATION

100%

100% SPONSORSHIP POTENTIAL

USP brings community together. High impact walls are durable and can be wrapped with sponsor logos and messaging which can be monetized to offset project costs

BENEFITS OF FIVE-A-SIDE



REVENUE COMPARISON

ARENA SOCCER VS FIVE-A-SIDE

1

ARENA
SOCCER FIELD

2

FIVE-A-SIDE
FIELDS

15,300 SF	SQUARE FOOTAGE	14,000 SF
12	PLAYERS PER HOUR	20
\$10	COST PER PLAYER PER HOUR	\$10
3,000	ANNUAL PRIME TIME HOURS	6,000
\$21.18	REVENUE PER SQUAREFOOT	\$42.86
\$120	REVENUE PER HOUR	\$200
\$360,000	ANNUAL PRIME TIME REVENUE	\$600,000



MORE REVENUE PER SQUARE
FOOT = HAPPY OWNERS



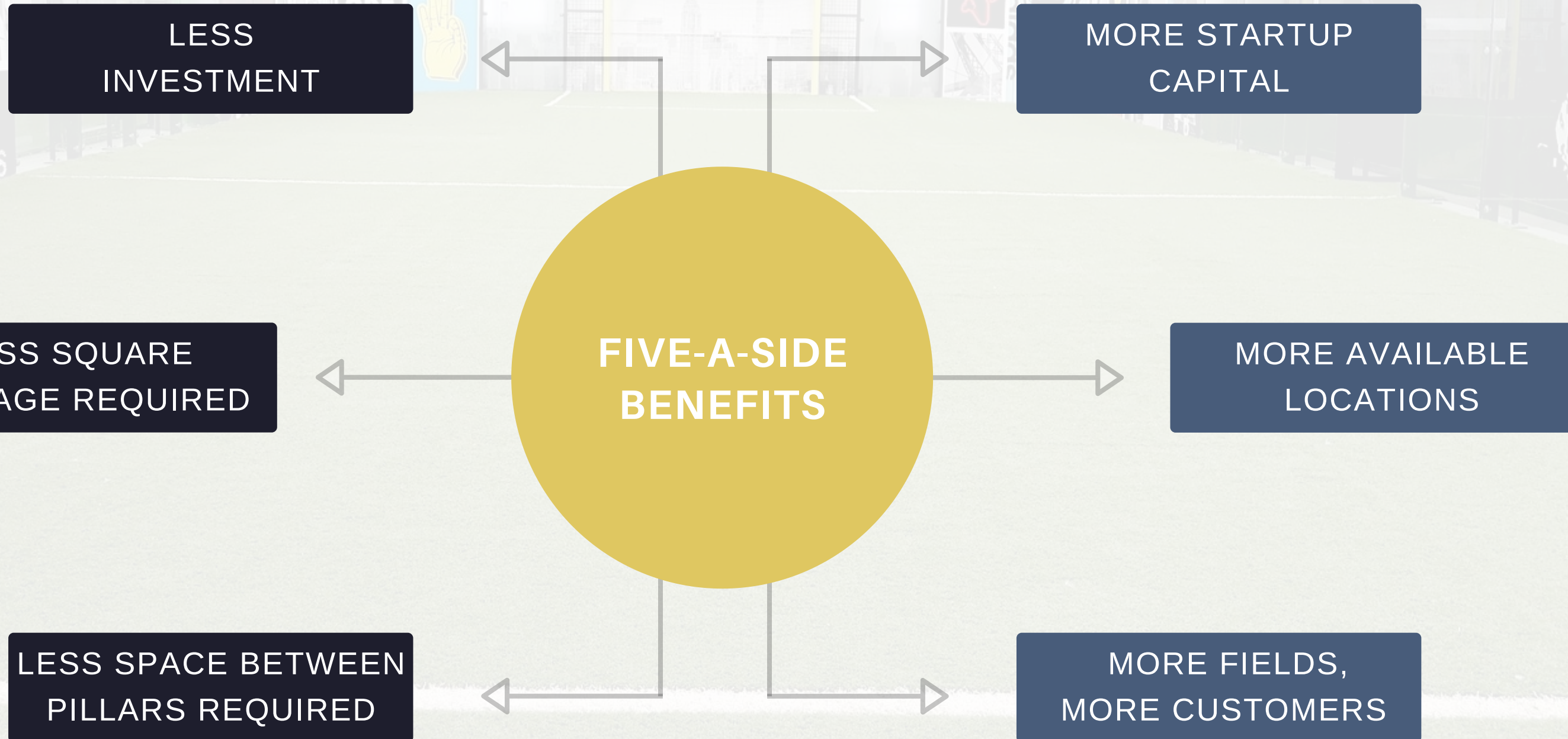
MORE PRIME TIME HOURS
= HAPPY CUSTOMERS



DOUBLE YOUR PROGRAM
CAPACITY IN LESS SPACE

LESS SPACE = MORE OPPORTUNITY

HELPING YOU GROW YOUR BUSINESS



BUILD WITH INTENTION

MAKE AN IMPACT IN YOUR COMMUNITY



PERFORM

ENJOY WATCHING PLAYERS FROM YOUR CENTER ACHIEVE GREATNESS

DEVELOP

ACTIVATE NEW REVENUE STREAMS BY PROVIDING SKILLS PROGRAMS

FULFILL

ANSWER THE DEMAND FOR YOUTH FIVE-A-SIDE RENTAL SPACE

CULTIVATE

CREATE A SPACE DESIGNED TO BUILD A LASTING SOCCER CULTURE

An aerial, monochromatic view of an urban soccer park. The park features four rectangular soccer fields arranged in a 2x2 grid, separated by a central building and walkways. The central building has a sign that reads "URBAN SOCCER PARK". To the left of the fields is a parking lot with several cars. The entire scene is overlaid with a semi-transparent yellow filter. In the top right corner, there is a white rectangular box containing the text "PRODUCT OVERVIEW".

PRODUCT OVERVIEW

BUILT TO LAST

The Best in the Business

COMMUNITY BUILDING



Inclusive, accessible
and fun.

LONGEVITY



Engineered for
durability.

COMPATIBLE CONSTRUCTION



Modularly designed
for dense areas.

AFFORDABLE



Cheaper/more efficient
than full fields.

SIMPLE SETUP



Installed in as
little as 2-3 days.

KID FRIENDLY



Public use compliant.
Tested for safety.

BRANDABLE



100% brandable
wall panels.

CORE COMPONENTS

Quality, Safety, Durability. Made in the U.S.A.



COOLING TURF

We use specially engineered, recyclable, FIFA certified turf with a cooling infill made for small sided soccer and the constant wear that it puts on the surface. Underneath is a channeled shock pad that ensures soft landings and drastically aids drainage.



INTEGRATED GOALS

Professional tubular goals, in our signature yellow, integrated into the system. Can be customized to fit your vision: futsal, street soccer, five-a-side options. With our optional Pavlov's Chain Ball Arrest Curtain™ add-on, each goal rings out with excitement.



LED LIGHTS

Play into the night with our highly efficient LED lamps. The Dark Sky Approved lights will not upset your neighbors, and can be plugged into regular electric outlets. Dimmable with wireless controls C UL Listed - USA



HIGH IMPACT WALLS

Made from structural metal insulated panels, USP boards are built to last and can be printed with sponsor logos, ads, artwork, or anything else you desire. Topped with 12' of all weather netting for a fully contained experience.



PRO FUTSAL FLOORING

USP's proprietary and patent pending flooring is the only solution available for both wet, dry, indoor, and outdoor play at professional futsal standards.

EN 14877 | EN 14808 | ASTM F1292



CONTAINMENT NETTING

Designed with the player, coach and spectator in mind. Spend less time chasing errant balls and more time focused on programming. Sideline netting to 12' containment. Endline netting to 16' containment. Roof netting option also available.

OPTIONS

Leading the Industry in Innovation



GLASS PANELS

To see all the action.



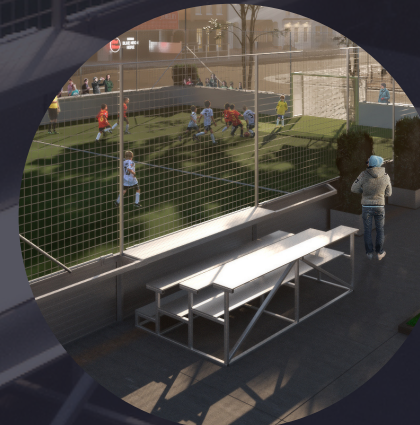
MODIFIED CONTAINERS

An amenity to complete your park.



POWDER COATING

To match your brand and style guide.



INTEGRATED SEATING

The ultimate player & fan experience.



BRANDABLE

For sponsors, logos and branding.

PANNA CAGE OPTION

Perfect for Smaller Areas, Indoor or Outdoor

- Standard Sizes
 - 20'x20' Footprint
- Standard Inclusions:
 - U3/Panna Goal: 3'x5'
 - Metal tubular goal netting
 - 50" tall silver panel boards
 - Spectator handrails
 - 11' total height containment netting
 - Step through door
 - Environmental Turf (shown) or Pro Futsal Flooring
- No foundations required
- Modular system allows for quick install and removal
- Customizing available
- Inquire for portable panna cage option
- Price: \$8,200



PRODUCT SPECIFICATIONS

Standard Inclusions & Sizes

- **Standard Sizes:**
 - Street Soccer: 40'x60' Playing / 43'x66' Footprint
 - Five-a-Side: 50'x80' Playing / 53'x88' Footprint*
 - Futsal: 60'x100' Playing / 63'x108' Footprint
- **Standard Inclusions:**
 - Pro-Tubular goals
 - 2 on endlines, 4 on sidelines for maximal play
 - Metal tubular goal netting
 - 50" tall silver panel boards
 - 10' benches - integrated
 - 10' 3 row bleachers - integrated
 - Planter box / storage locker counterweights
 - Oxford style full doors on player side halflines
 - 12' & 16' tall, total height, full containment netting
 - LED, dark sky compliant lighting on all 4 corners
 - Environmental Turf (shown) or Pro Futsal Flooring
- **No foundations required**
- **Modular system allows for quick install and removal**
- **Customizing available**
- ***USP's most recommended size**



RECOMMENDED LAYOUT

Minimum Viable Product

- **Most Popular Layout:**
 - Field Playing Dimensions: (2) 50'x80'
 - Field Footprint: 53'x88'
 - Approx Park Footprint: 110'x130' (14,300 SF)
- **Recommended Park Inclusions and Amenities**
 - Modified shipping containers
 - Check-in, retail, snack shack, restrooms, lounges, offices
 - Aids in flow of traffic and park enclosure
 - 20' Center Aisle
 - Enhanced spectator and player environment
 - Community focused and close to the action
 - Warm-up area
 - Integrated Seating
 - For spectators and players
 - Bar top option available
 - 1 tier and 3 tier options



STANDARD PRICING

Installed, Delivered & 90 Day Wellness Check Included

BEST

BETTER

GOOD

40'X60'

\$128K

\$76K

\$52K

50'X80' *

\$166K

\$94K

\$56K

60'X100'

\$202K

\$124K

\$68K

BEST

WALLS, 2 ENDLINE GOALS, 2 DOORS, SIDE & ENDLINE NETTING, TURF OR FUTSAL FLOORING, 4 SIDELINE GOALS, LED LIGHTS, INTEGRATED SEATING, TECHNOLOGY PACKAGE

BETTER

WALLS, 2 ENDLINE GOALS, 1 DOOR ENDLINE NETTING, TURF OR FUTSAL FLOORING

GOOD

WALLS, 2 ENDLINE GOALS, 1 DOOR

*OUR MOST POPULAR SIZE

WARRANTY & LIFESPAN

We Stand Behind Our Products

USP SYSTEM & LIGHTS PRORATED WARRANTY

WARRANTY PERIOD

PRORATED VALUE

YEARS 1-4

100%

YEARS 5-6

50%

YEARS 7-10

25%

YEARS 10+

10%



USP SYSTEM & LIGHTS

WARRANTY

10 YEARS
PRORATED*

LIFESPAN

20-30 YEARS



CONTAINMENT NETTING

1 YEAR

2-3 YEARS



USP FIVE-A-SIDE TURF

RESIDENTIAL - 15 YEARS
COMMERCIAL - 8 YEARS

RESIDENTIAL - 16+YEARS
COMMERCIAL - 10+ YEARS



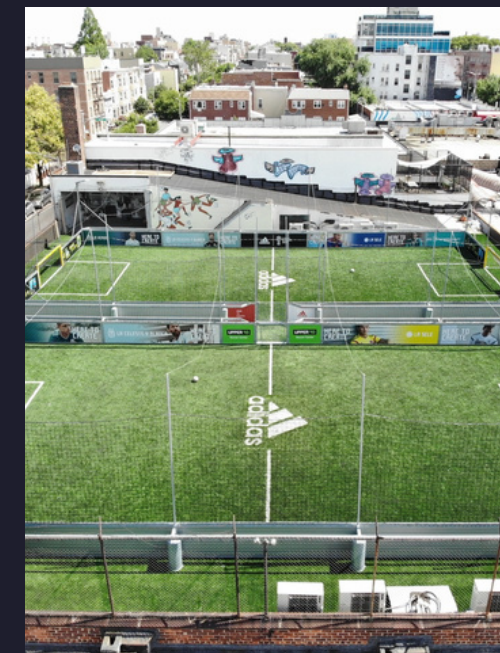
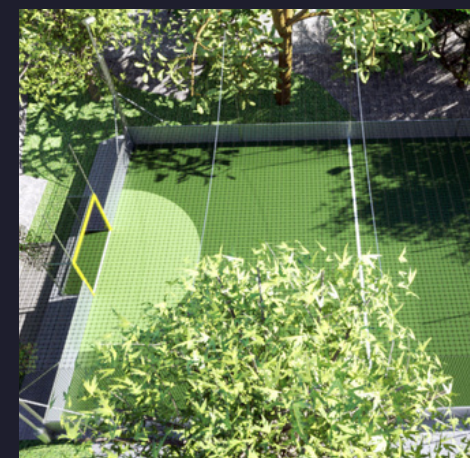
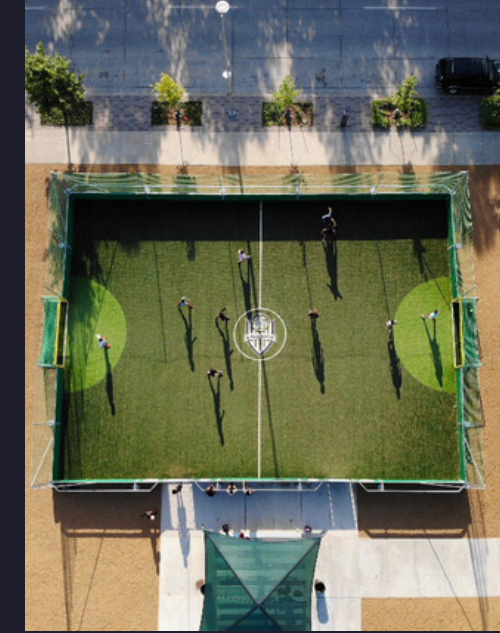
USP PRO FUTSAL FLOORING

RESIDENTIAL - 15 YEARS
COMMERCIAL - 8 YEARS

RESIDENTIAL - 16+YEARS
COMMERCIAL - 10+ YEARS

RECENT PROJECTS

Dedicated to Superior, Turnkey Service



NEXT STEPS



GETTING STARTED

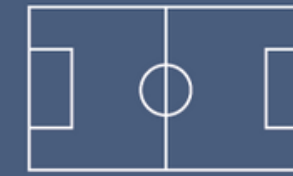
Equipping You For Success

PROJECT
SPECIFIC
RENDERING



FINAL
PRODUCT
PHOTO

PROJECT DESIGN FEE



PROJECT PACKAGE:

\$2,500 applied towards
end balance



Personal Project Consultant

Project Specific Renderings & Site Plan

Financing Packet

Site Requirements

Field Drawings

Lighting and Electrical Engineering Information

Pro Forma Financial Statement for 1 or 2 Fields

(1) Site Visit From Your Project Consultant

nonrefundable, applied towards end project balance

LOGISTICS

Shipping and Handling Cost Estimate



ZONE 1

\$3290



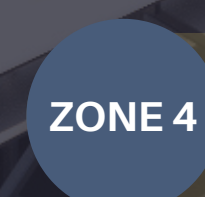
ZONE 2

\$4073



ZONE 3

\$5207



ZONE 4

\$6391

*SHIPPING AND HANDLING **BILLED AT COST** AT FINAL INVOICE.

**COST ESTIMATE IS REFLECTIVE OF 1 OR 2 FIELDS. PLEASE INQUIRE FOR COST SAVINGS FOR 3 FIELDS OR MORE.

***ALASKA, HAWAII & INTERNATIONAL PLEASE INQUIRE FOR A CUSTOM ESTIMATE.

TURNKEY PROCESS

Be Playing in 60 Days

**SUBMIT
DESIGN FEE**

\$2500

*\$2500 Design Fee
is applied towards
end balance*

**PRODUCTION
BEGINS**

50%

*50% deposit begins
production and
reserves inventory*

**SHIPPING &
DELIVERY**

25%

*A second 25% deposit
due upon production
completion*

**INSTALLATION
BEGINS**

25%

*Final 25% balance
due on target
installation date*

**WELLNESS
CHECK**

90 Days

*A 90 day wellness check
is included to assure
years of success*

THANK YOU



WWW.URBANSOCCERPARK.COM